



HEDSOR HOUSE
— ENGLAND —

OVERNIGHT GUEST
INFORMATION DOCUMENT

HOW TO FIND US

Welcome to Hedsor House. Ahead of your visit to our estate, here is some useful information.

BY CAR

The Hedsor estate is just 30 minutes by car from west London, just a few miles from the M4 (J7) and M40 (J2) and less than 30 minutes from London Heathrow Airport.

If using Sat Nav use the postcode SL6 0HX. Please note that some devices are unable to recognise the Hedsor estate, so we always recommend downloading our detailed directions document in advance of your trip. [Click here for directions.](#)

We have 100 car parking spaces as well as an overflow car park field if required. Cars are not allowed to be left overnight unless you are staying at Hedsor House as a resident. If there is an event the following day, all cars must vacate the car park by 10.00am.

BY TRAIN

From London Marylebone to Beaconsfield, the journey time is approximately **22 minutes**.

From London Paddington to Slough, the journey time is approximately **15 minutes**.

From London Paddington to Burnham, the journey time is approximately **32 minutes**.

All the local stations listed below are a short taxi journey away:

- Taplow – 3.6 miles
- Burnham – 4.2 miles
- Beaconsfield – 5.1 miles
- Maidenhead – 5.3 miles

The newly opened Elizabeth Line runs through Maidenhead, Taplow & Burnham and provides direct connections to London Heathrow & Central London.

BY TAXI

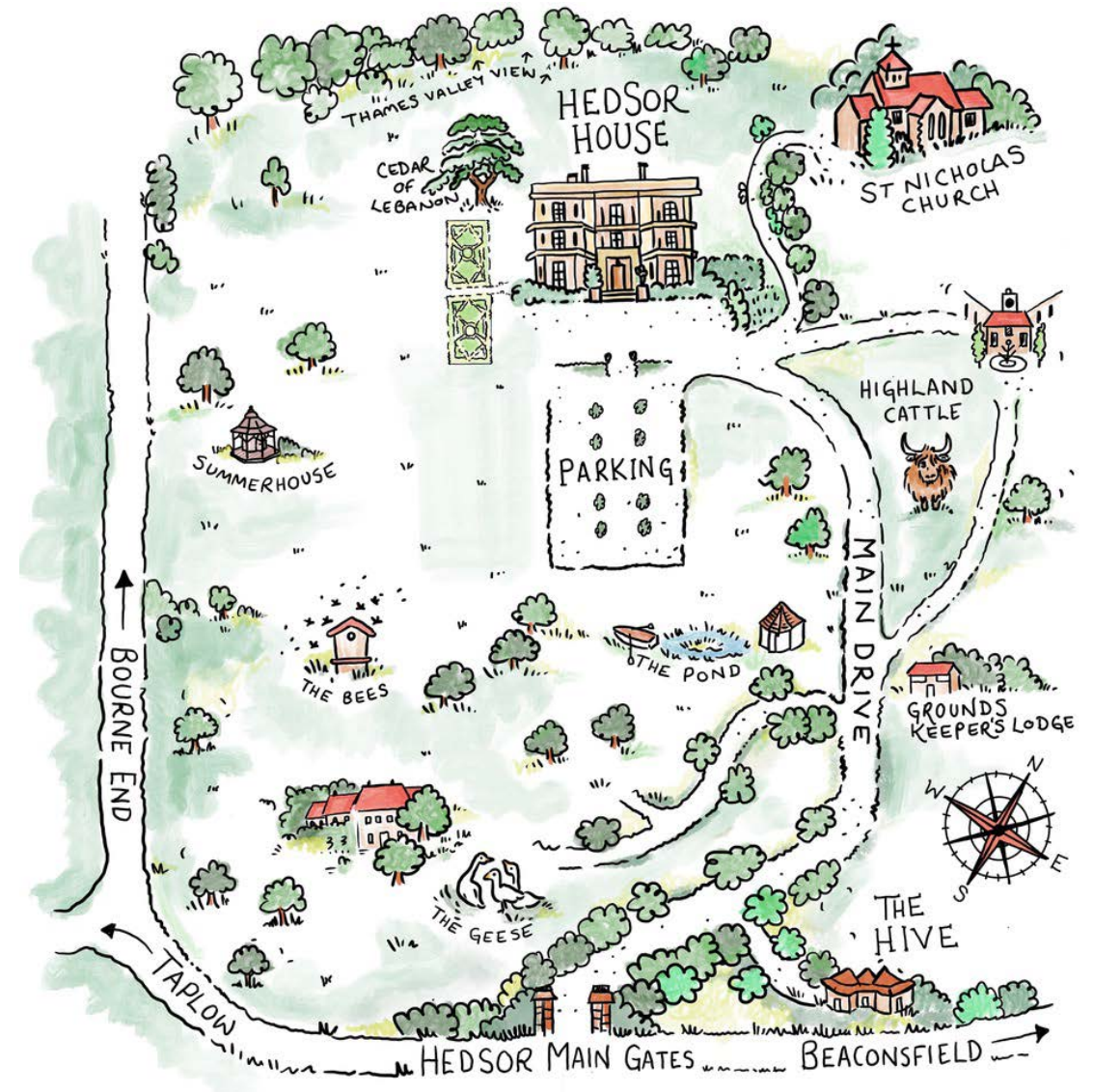
From Burnham / Taplow area:

- Windsor Cars – 01753 677 677
- Burnham Cars – 01628 544 577
- Golden Executive – 01628 622 955
- Riviera – 01628 666 777

From Beaconsfield area:

- Beaconsfield Taxis – 01753 208 168
- Aspire Taxis – 01494 611 200

We strongly recommend pre-booking a taxi. As you would expect, set in over 100 acres of historic parkland, Hedsor House is a little off the beaten track. Therefore catching a passing taxi is not an option!



ACCOMMODATION

BEDROOMS

Hedsor is a private house, rather than a hotel, and as such the 13 overnight guest bedrooms can only be allocated by your hosts (our hirer). We regret that we cannot take individual room bookings or requests.

The maximum number of people allowed per room is two and there is a zero-tolerance policy on additional guests due to fire regulations.

CHECK-IN

Resident guests can check in to the Florence Suite and Alexander Suite from midday. All other bedrooms, check in is from 2:00pm.

The Hedsor Duty Manager will be onsite to manage guest check-in. Please note that we do not offer a porter service and there is no lift to the bedrooms on the second floor – we recommend packing light wherever possible!

CHECK-OUT

Bedrooms must be vacated by 10:00am. All guests must check out, return their bedroom key and depart the estate by this time to avoid your host (our hirer) incurring additional fees.

The happy couple thank you in advance for observing this time.

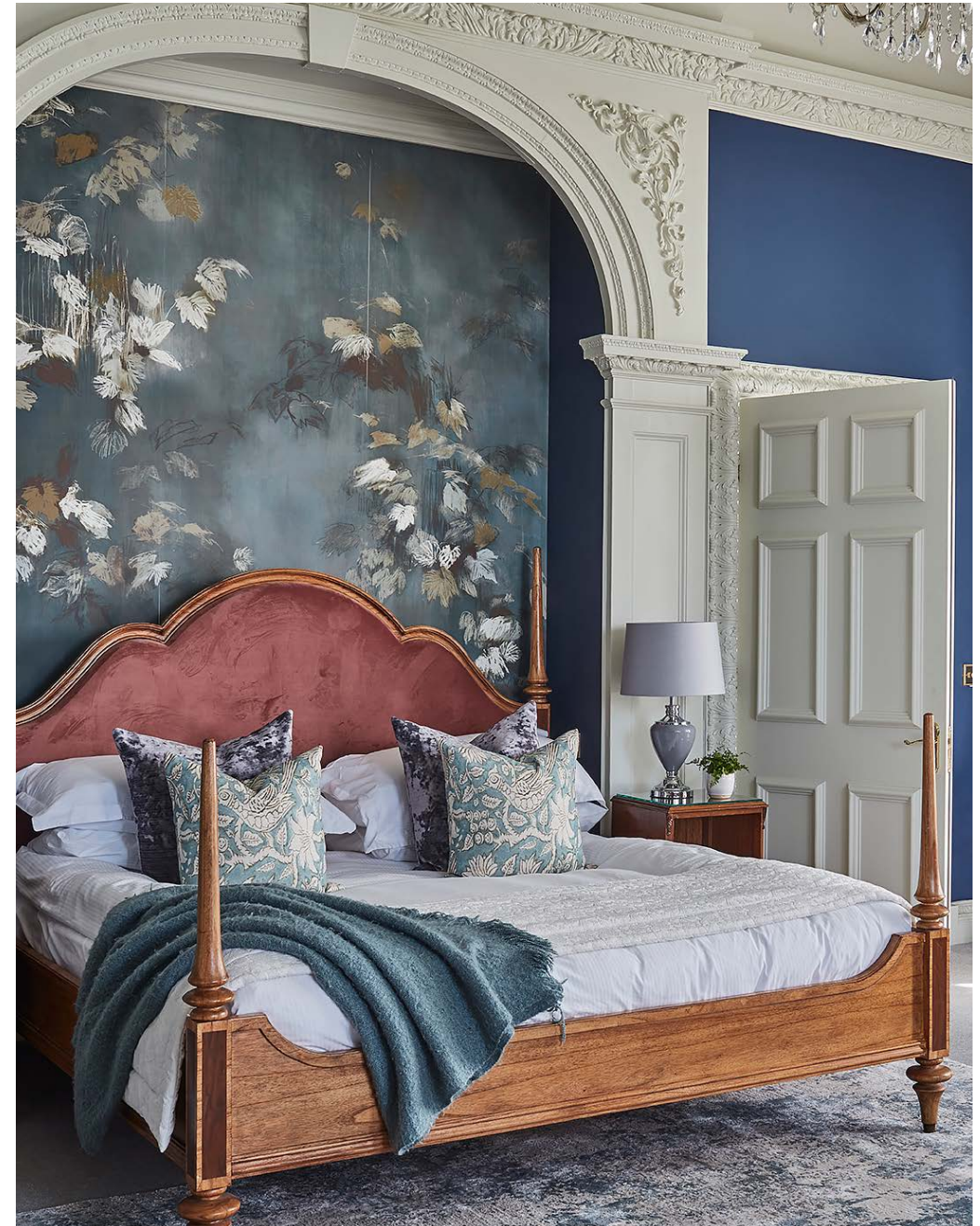
BEDROOM AMENITIES

- Super king size bed (please note that room 6 has a king size bed)
- Hypoallergenic pillows and bedding
- ELEMIS toiletries
- Ensuite bathroom
- Tea and coffee making facilities
- Ironing board and iron
- Still and sparkling water
- Hairdryer

As a private house rather than a hotel, we'd like to make you aware that bedrooms do not have air conditioning, a minibar, fridge or a safe, and we do not offer room service.

THE DUSTIN SUITE, THE RESIDENTS' LOUNGE

As a resident, at the end of the event you are welcome to enjoy a nightcap in the resident's lounge, called the Dustin Suite, with your hosts. A small selection of wine, beer and soft drinks, left over from the event, will be taken to this room. Please note that spirits are strictly not available and this is for residents only. Non-residents are kindly asked to leave the house and estate at the end of the event.



BREAKFAST

A luxury breakfast will be served in the Library at the front of the house from 8am until 9:30am. As check-out is 10am, we suggest bringing your luggage down with you to breakfast.

USEFUL INFORMATION

LITTLE AL AND OUR HIGHLAND CATTLE

When you drive down the beautiful rhododendron lined drive you will eventually reach our Highland cattle field. Feel free to admire Little Al and his friends from a safe distance however please do not get out of your vehicle or enter the field – despite looking charming and friendly they are wild animals.

CONFETTI & PETALS

The preservation of our beautiful house and grounds is one of our top priorities and for this reason we do not allow any confetti or petals outside or inside the house. Your co-operation is greatly appreciated and the happy couple thank you in advance for respecting this.

SMOKING

Smoking, including e-cigarettes, is permitted on the grounds but not inside the house. There are stone pots at the bottom of each set of steps at the front and side of the house for use as ashtrays.

DISABLED FACILITIES

Hedsor House is a stunning venue of great historic importance and has been updated to allow disabled access and facilities in specific areas. There is an accessible cloakroom on the ground floor and a wheelchair lift into the ground floor from our Dutch Sunken Garden.

Please note, all our guest bedrooms are on the second floor and unfortunately due to the historic nature of the building there are no internal lifts within the house. For guests with mobility issues, we would be happy to make recommendations of local hotels with ground floor bedrooms.

